

WE ARE **STRONG** BECAUSE
WE ARE **RELIABLE**

Reliable Machinery
Global Service 

KALTENBACH KBS 750 DG USED BAND SAWING MACHINE

WHAT'S IN IT FOR YOUR WORKSHOP?

The Kaltenbach KBS 750 DG Band Sawing Machine is engineered to deliver meticulous cuts and optimal performance, making it an invaluable asset for enhancing production capabilities.

Its key features include precision cutting capabilities that allow this machine to achieve intricate and accurate cuts, catering to even the most complex project requirements. The machine's effortless operation is ensured by streamlined controls that empower operators to maximise their efficiency while maintaining accuracy.

TECHNICAL DESCRIPTION

- Year 2006
- Capacity (90°): 750 mm x 500 mm
- Band saw power: 5.5 kW
- Speed: 15-100 m/min
- Control: PC with Proficut software
- Measurement system: LS 270 NC
- Infeed conveyor: for materials 2.2 - 15 m
- Outfeed conveyor: for materials 1.2 - 12 m

TERMS AND CONDITIONS

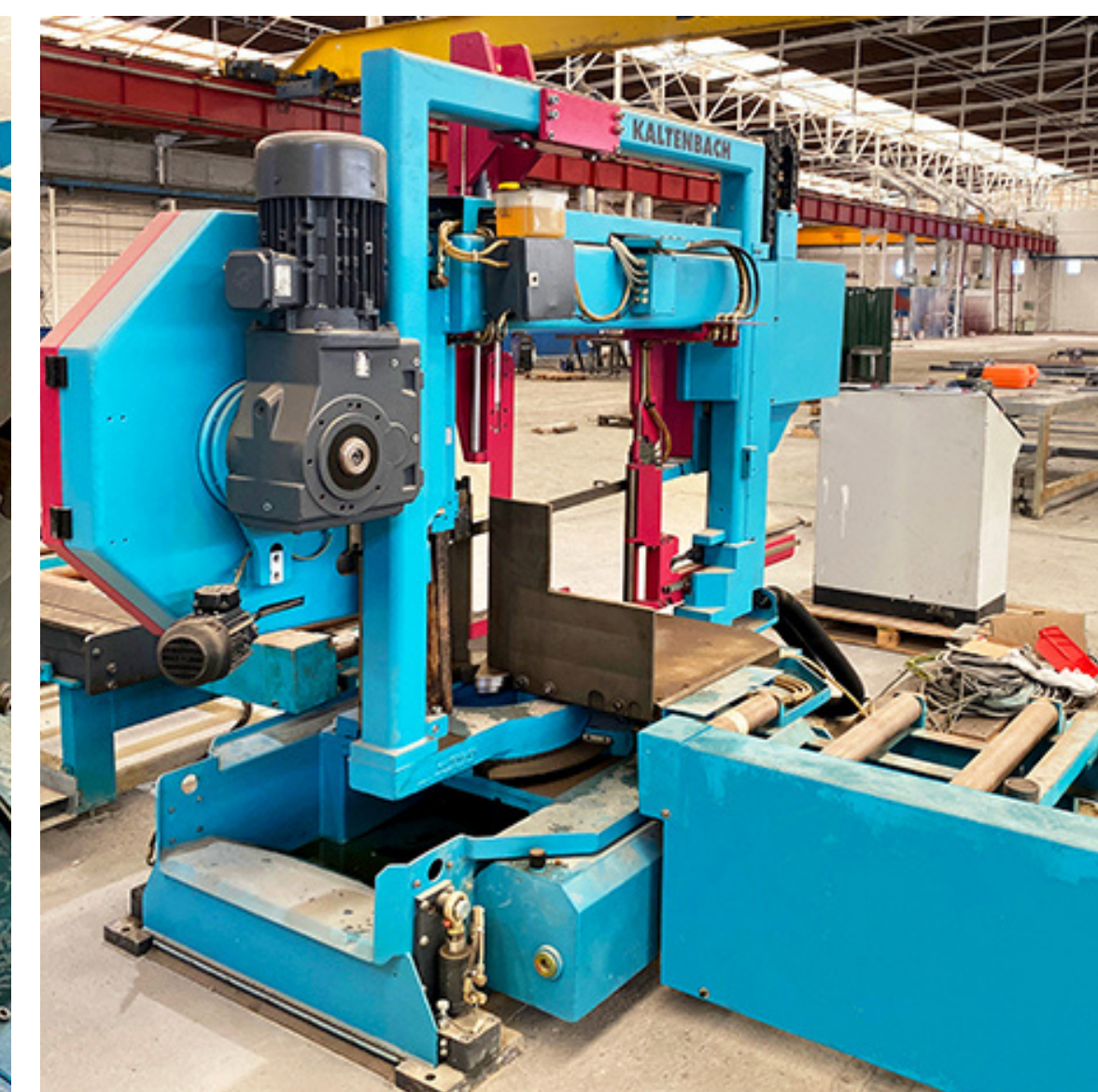
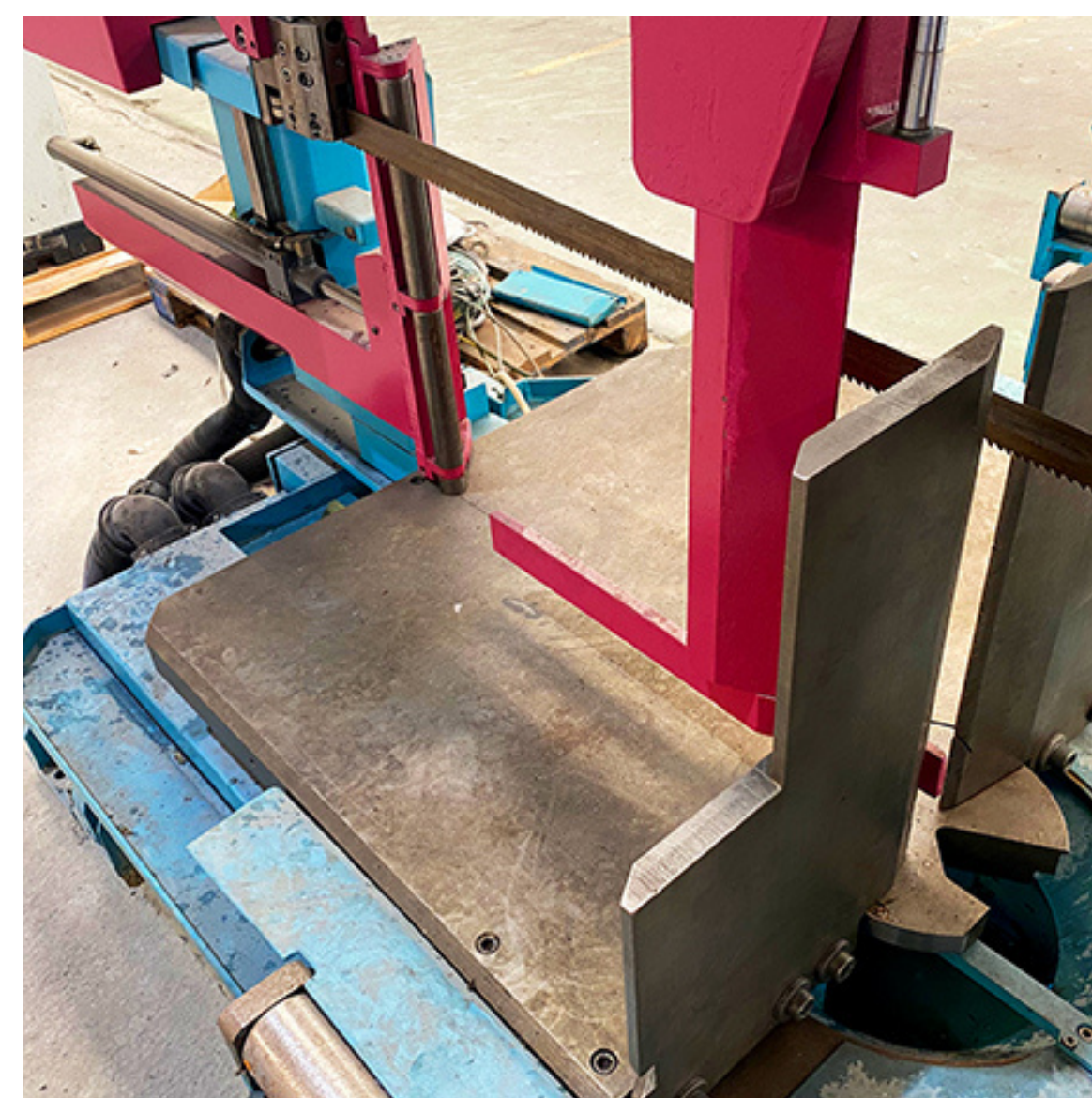
- Machine subject to availability
- Payment: 50% down payment immediately after conclusion of contract + 50% before start disassembling
- Delivery: immediately ex location, EXW (Zaragoza - Spain)
- Warranty: Used machine, no warranty
- Transport: Not included

OTHER IMPORTANT INFORMATION

- The price does not include disassembly nor assembly. This is an additional service we offer
- Flights and travelling costs + hotels for our technicians borne by the customer
- The machine is in very good condition, revised by the USM team, can be inspected and can be seen in operation
- **This quotation is valid for 2 weeks.**

PRICE

EUR 131,250.00 EXW



+61 8 6388 9639



sales@usedstructuralmachinery.com.au

usedstructuralmachinery.com.au