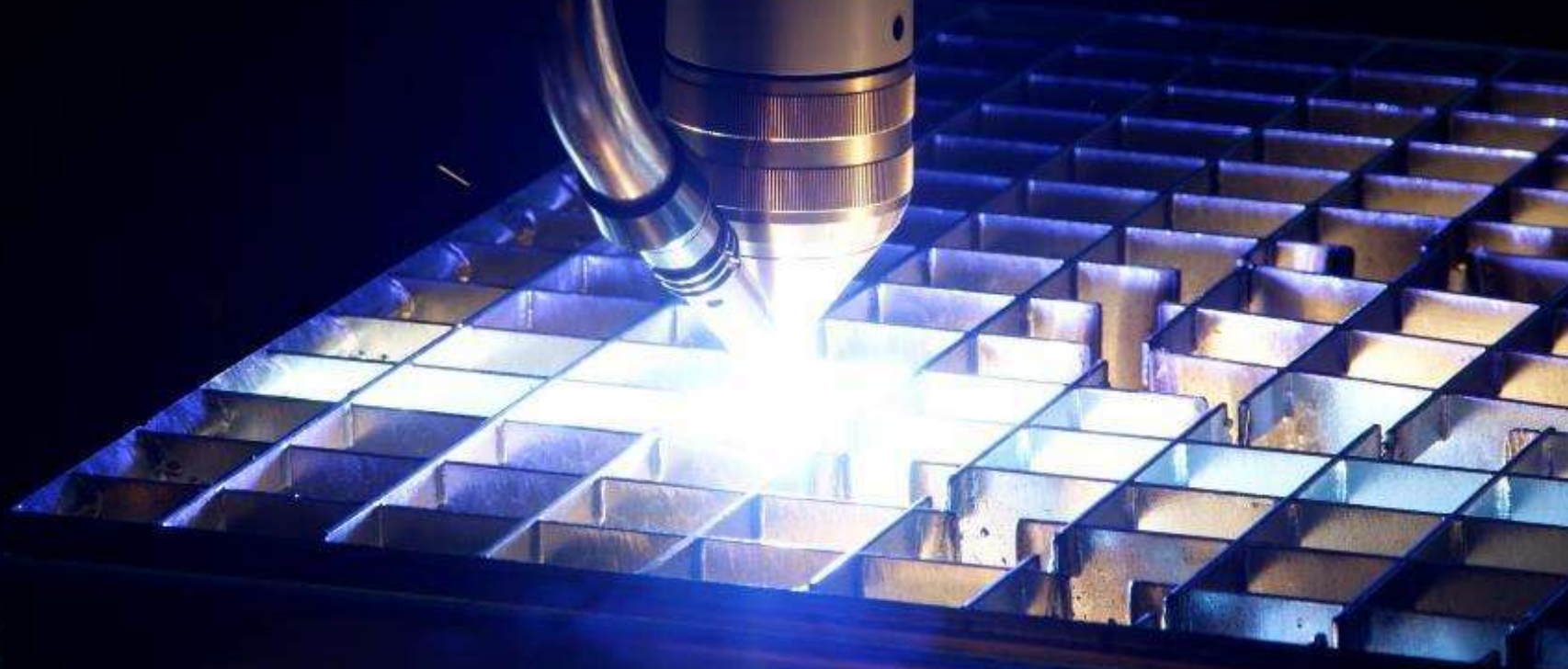




**Cutting at the highest levels**



**SOITAAB HotWire Plasma Grate Cutting**

## Soitaab's Plasma Grate Cutting System

Cuts interrupted surfaces like steel or aluminum grating at high speeds, both efficiently and with high quality results.

- *5-10 times faster than oxy-fuel cutting*
- *No expensive rotating head*
- *No Pre-heating*
- *No loss of Plasma Arc*
- *No starts and stops on each bar to damage consumables*
- *Continuous cutting at high speeds*
- *Plasma Table Size - 1m up to 4m wide*
- *Up to 80mm grate depth and variable bar widths are no problem!*







## LINEA PRO

The Lineatech Pro with the Plasma Hotwire Grate Cutting System does not require a rotation axis.

Offers faster cut speeds with less wire used during cutting.

Versatility to cut Carbon Steel, Stainless Steel, or Aluminum on one machine.



# SOITAAB GROUP

100%   
DESIGNED AND  
MADE IN ITALY



**LINEA**PRO



[www.soitaabusa.com](http://www.soitaabusa.com)



## LINEA PRO

### 2 ½" Grate Cross Bars



## LINEA PRO





## PLASMA NOVA

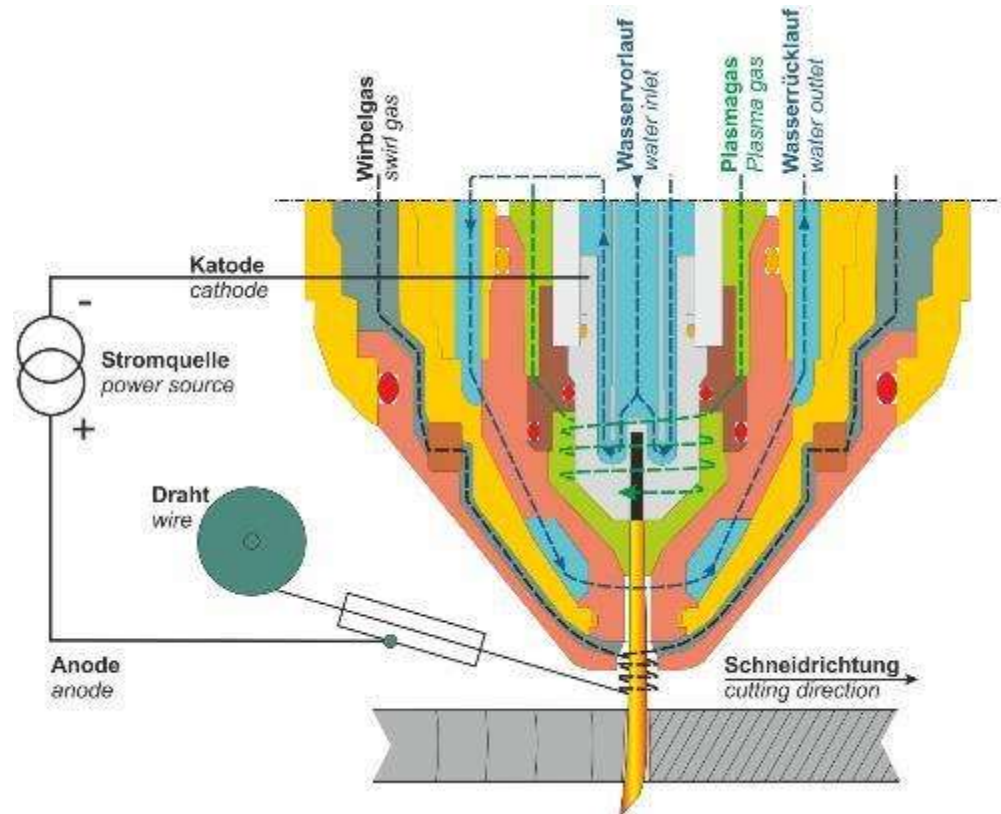
The Plasma NOVA with the Plasma Hotwire Grate Cutting System. Complete with Bevel cutting, pin stamp marking, and the TuboCut pipe cutting attachment.



# HotWire Plasma Cutting

The Patented application for cutting of conductive, non-conductive, combined and interrupted work-pieces.

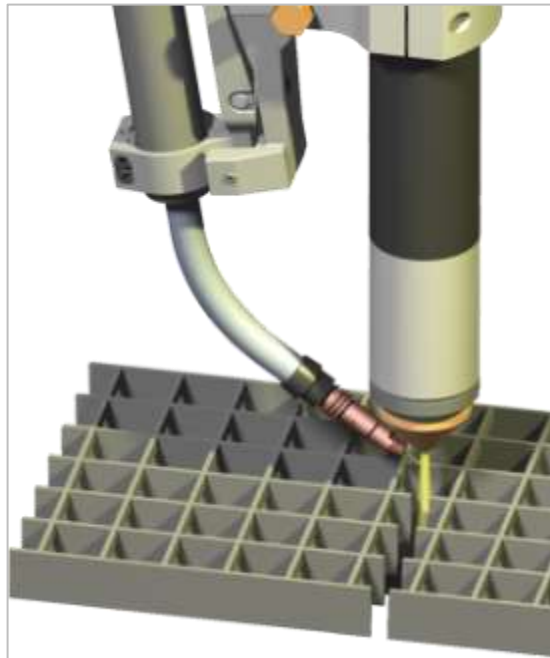
- Based on indirect plasma cutting process, where work-piece is not part of the electric circuit.
- A welding wire is used as the anode and is continuously fed during cutting process; no work-piece connection is necessary.
- Parts are cut accurately and cleanly as they sit under the plasma torch !





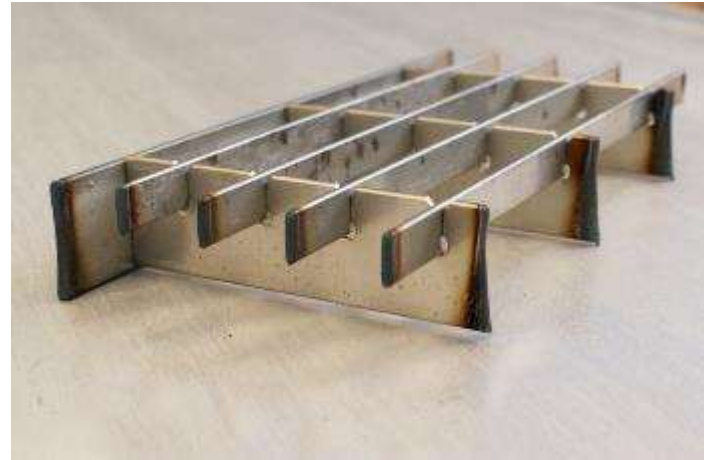
# HotWire Plasma Cutting

- Suitable power sources:  
360 Amp Plasma
- The standard applications for plasma cutting remain the same in addition to HotWire plasma cutting. By removing the wire feeder standard flat plate cutting is possible
- Retooling is easy and quick

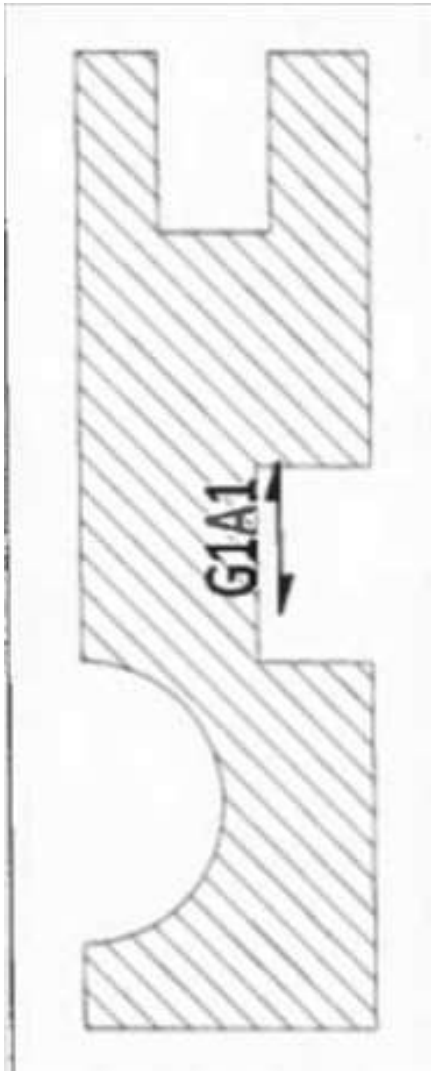


# HotWire - Advantages

- Insensitive to fluctuations of distance between plasma torch and work-piece
  - Torch has capacitive height sensing
  - No ground connection required
- Low wear of consumables due to low rate of re-ignition of the torch
- Almost no vibrations during the cutting process
- No break-off of plasma arc at low cutting speed
- Great cut quality similar to direct plasma cutting







## Example 1: The OLD TECHNOLOGY Oxyfuel Grate Cutting

Speed: 17 in/min

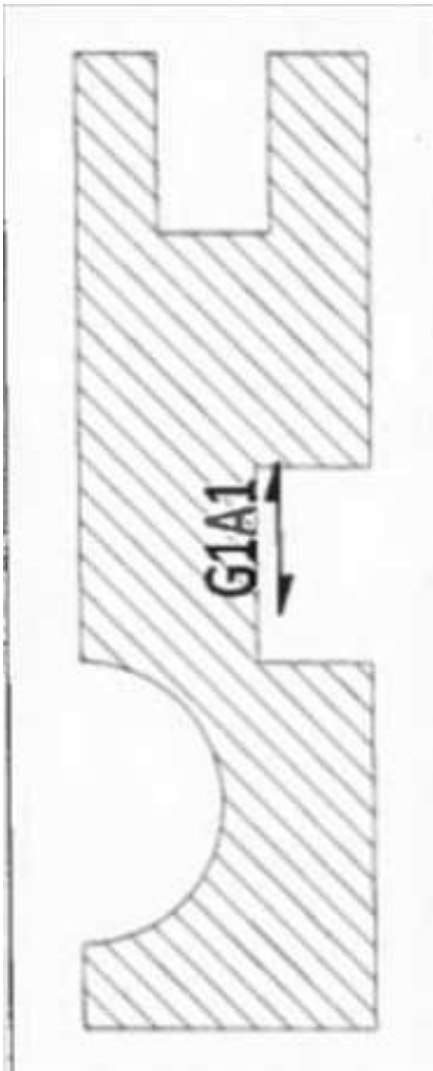
Rapid Position Moves: Variable speed with length

**Total Cut time:** 6 Minutes 12 Seconds

## The NEW TECHNOLOGY Plasma Hot Wire

Speed: 82 in/min  
Amperage 360

**Total Cut time:** 1 Minute 57 Seconds





## The Plasma Hotwire Advantage !!

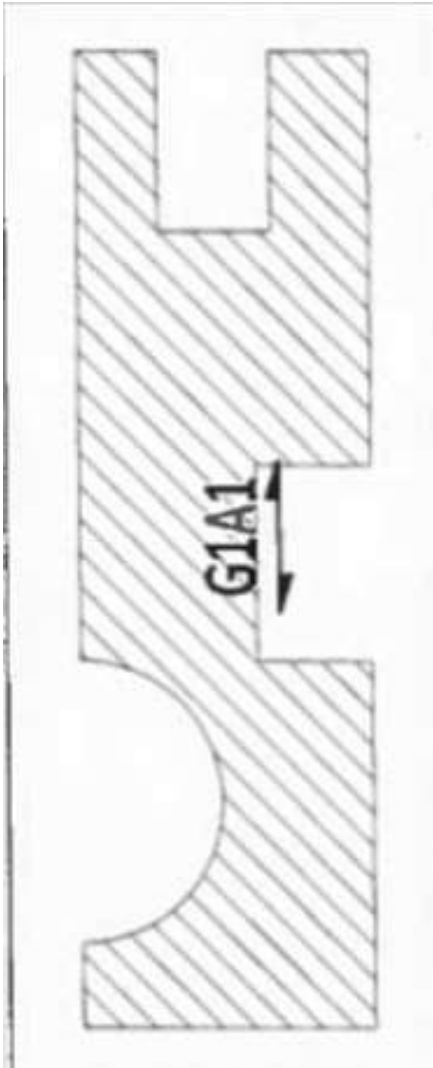
### Plasma Hotwire Cut

Plasma Cost \$/hr.:	\$10/hr
Typical Labor Rate:	\$25/hr
Total Plasma \$/hr	\$35/hr.
Part Cut Time:	1 min 57 sec
<b>Total Plasma Cut Cost</b>	<b>\$1.14</b>

### Oxyfuel Grate cut

Oxyfuel Cost \$/hr.:	\$8/hr
Typical Labor Rate:	\$25/hr
Total Oxyfuel \$/hr	\$33/hr.
Part Cut Time:	6 min 12 sec
<b>Total Oxyfuel Cost</b>	<b>\$3.41</b>

<b>Total Cut Time Savings:</b>	<b>4 min. 15sec.</b>
<b>Total Cut Cost Savings</b>	<b>\$2.27</b>



## Example 2: The OLD TECHNOLOGY Hand Held Plasma Torch Cutting Round Discs

- Lay grate on floor
- Put round template over grate positioning to cross bars
- Cut-out using hand torch
- Clean-up edges

**Total Cut time:** 2 hours 35 min







## The Plasma Hotwire Advantage !!

- High Speed Plasma Cutting at 56" /min
- Excellent Edge Quality
- Little to No Clean-up
- Total Cut time: 2 min. 3 sec



## The Plasma Hotwire Advantage !!

### Plasma Hotwire Cut

Plasma Cost \$/hr.:	\$10/hr
Typical Labor Rate:	\$25/hr
Total Plasma \$/hr	\$35/hr.
Part Cut Time:	2 min 03 sec
<b><u>Total Plasma Cut Cost</u></b>	<b>\$1.19</b>

### Hand Held Plasma Torch

Plasma Cost \$/hr.:	\$12/hr
Typical Labor Rate:	\$25/hr
Total Hand Held Plasma \$/hr	\$37/hr.
Part Cut Time:	2 hrs 35 min
<b><u>Total Hand held Plasma Cost</u></b>	<b>\$95.58</b>

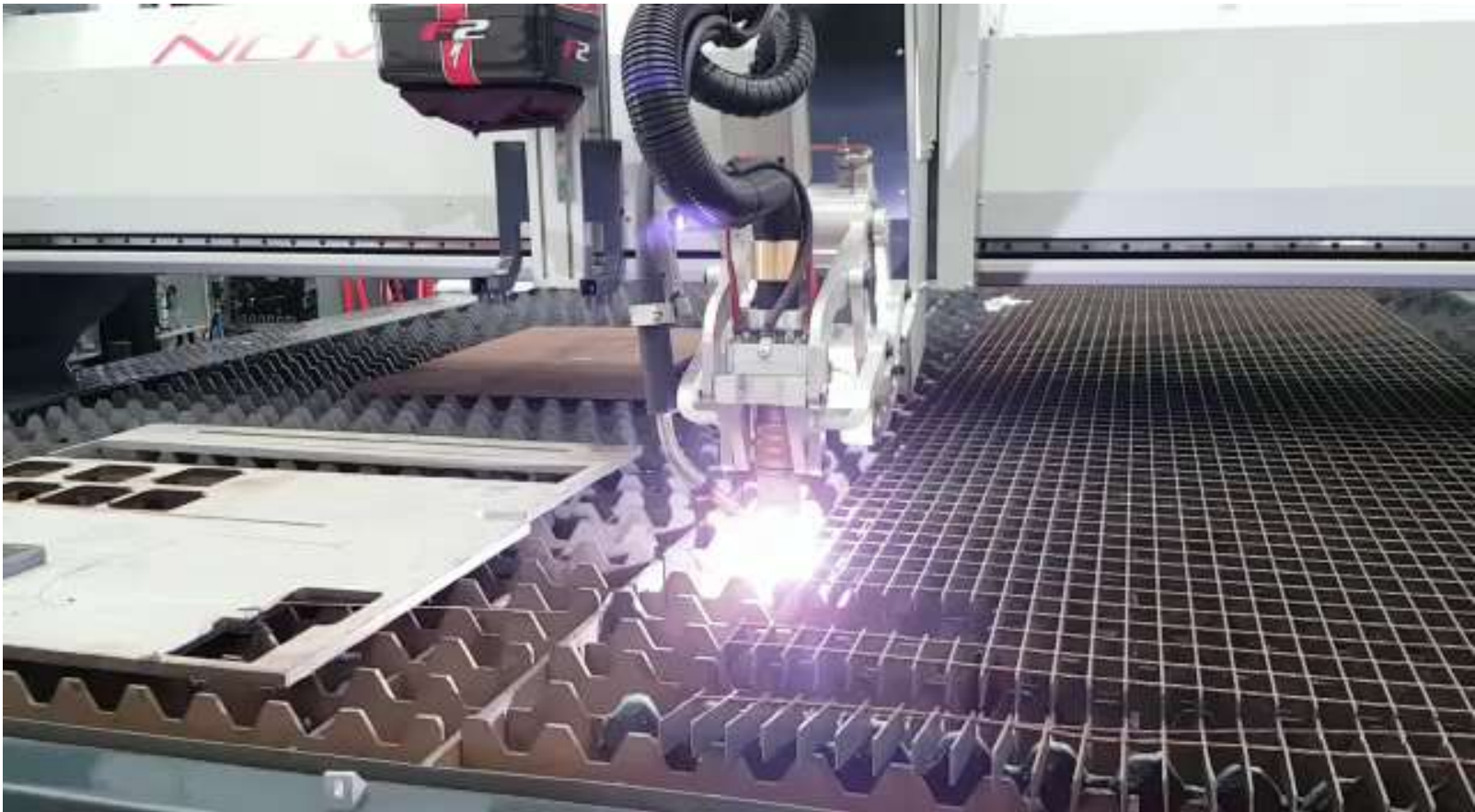
**Total Cut Time Savings: 2 hrs. 32min.**

**Total Cut Cost Savings: \$94.39**



## [The Soitaab Plasma Hotwire Grate Cutting – click here](#)

[Or visit YouTube link at - https://youtu.be/lzxHWpoXRow](https://youtu.be/lzxHWpoXRow)



## The Soitaab Plasma Grate Cutting System

[Click here](#)

Or visit YouTube link  
<https://youtu.be/xz6-Cuumgoo>





## The Soitaab Plasma Grate Cutting System

Cutting Round Discs –  
*[click here](#)*

or

<https://youtu.be/RSxGVEQHyP4>

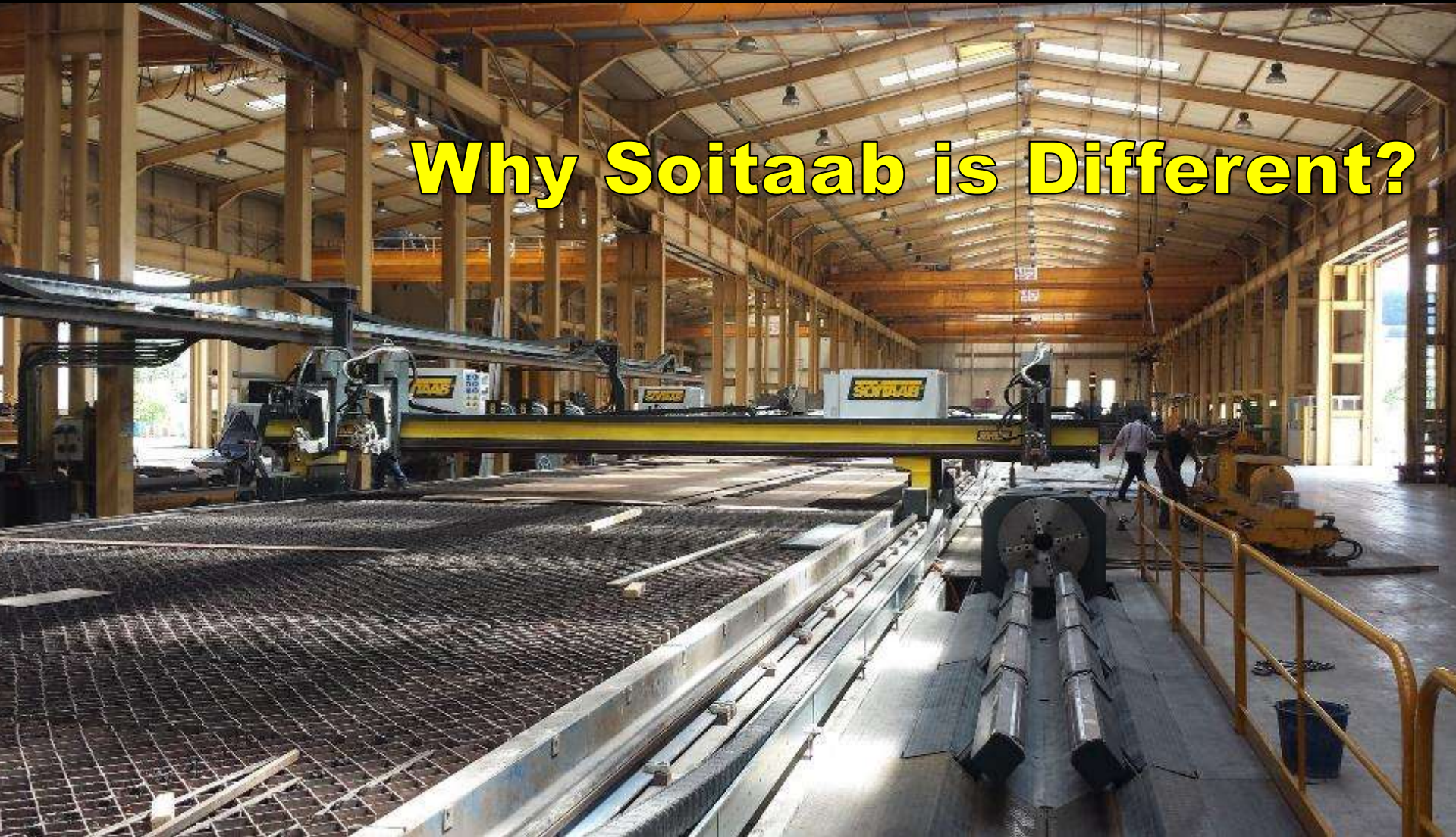


SOITAAB GROUP

100%  
DESIGNED AND  
MADE IN ITALY



**Why Soitaab is Different?**



[www.soitaabusa.com](http://www.soitaabusa.com)



Soitaab owns one of the largest Steel Service Center in Italy. Riva Steel produces parts for our needs and sells parts to European Manufacturers.





Soitaab's Rival Division is a complete machining and fabrication factory. They manufacture the massive frames for Soitaab Machines and the FRIGGI Band Saws. They also do machining work for other companies.







**Soitaab has some of the largest machine tools made allowing them to machine enormous surfaces in a single set-up and pass.**



## Soitaab's Gold Medal Service and Support



- The components are from major manufacturers with a worldwide presence and available from anywhere.
- SOITAAB delivers a BOM with Soitaab and OEM part numbers. This ensures, easy availability of spare parts and guarantees a competitive price level.
- On-line diagnostics and tech support, to diagnose problems, even running the machine remotely.
- Phone support with knowledgeable installation and technical support staff
- Best in class training programs both remote and on-site customized to customer requirements
- The Highest machine reliability in the industry, CE Certified.





***World Class technology coupled with Gold Medal Service and Support and a customer first philosophy sets Soitaab apart from the competition!***

***From the simplest cutting table to the most complex one of a kind systems only Soitaab delivers the best solutions, affordably priced, and backed by the best training, service and parts inventory.***

# SOITAAB GROUP

100%   
DESIGNED AND  
MADE IN ITALY



*Welcome to  
Soitaab !*

*Thank You*



[www.soitaabusa.com](http://www.soitaabusa.com)