



Process Data Monitoring

Online visualisation of operating and process data

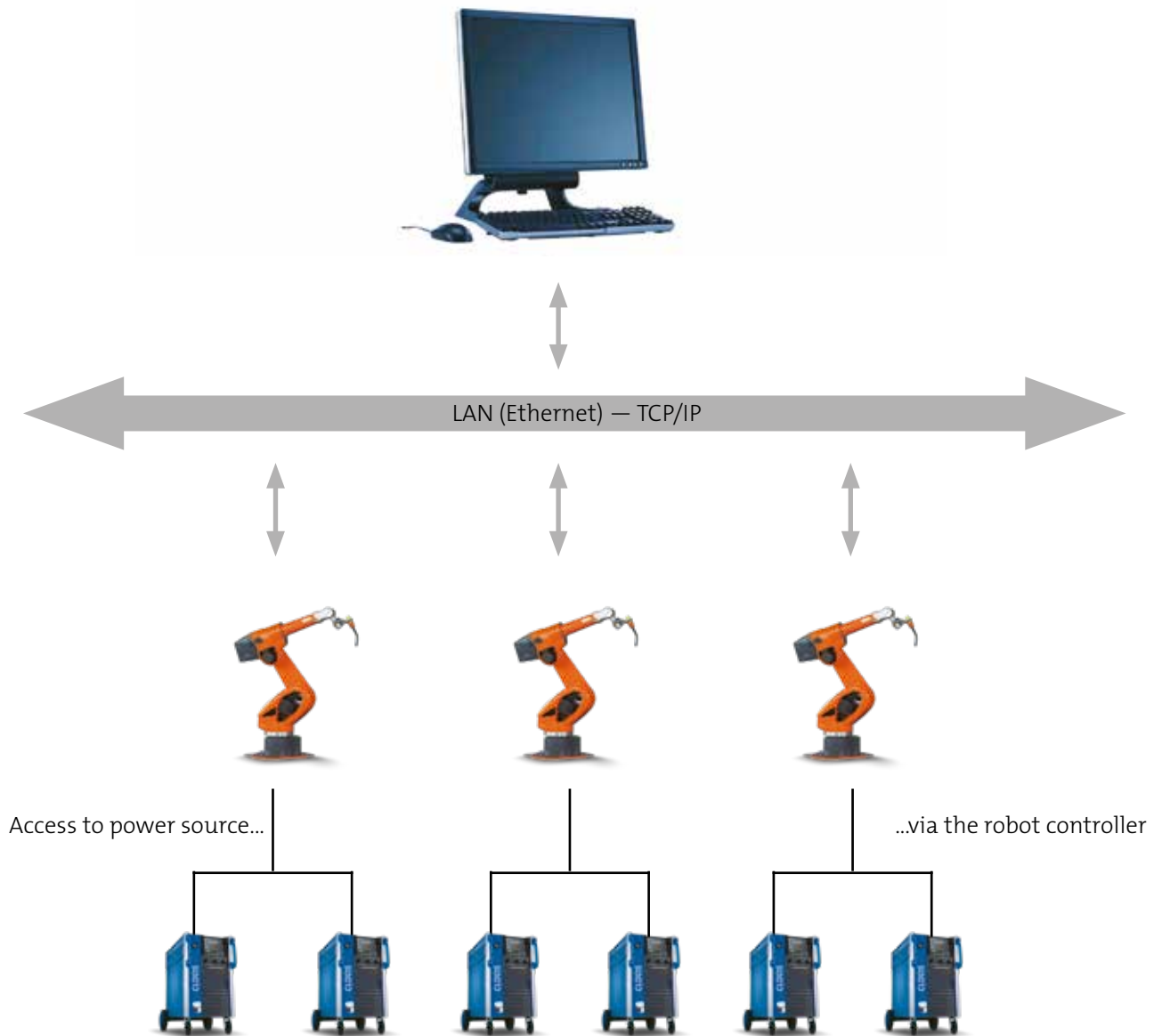
CLOOS

Weld your way.

www.cloos.de

Online visualisation of operating and process data





Access to QIROX Robot via Ethernet and TCP/IP

File interface

The QIROX PC Software PDM (Process Data Monitoring) offers a file interface to a master computer system to have access to the robot process data.

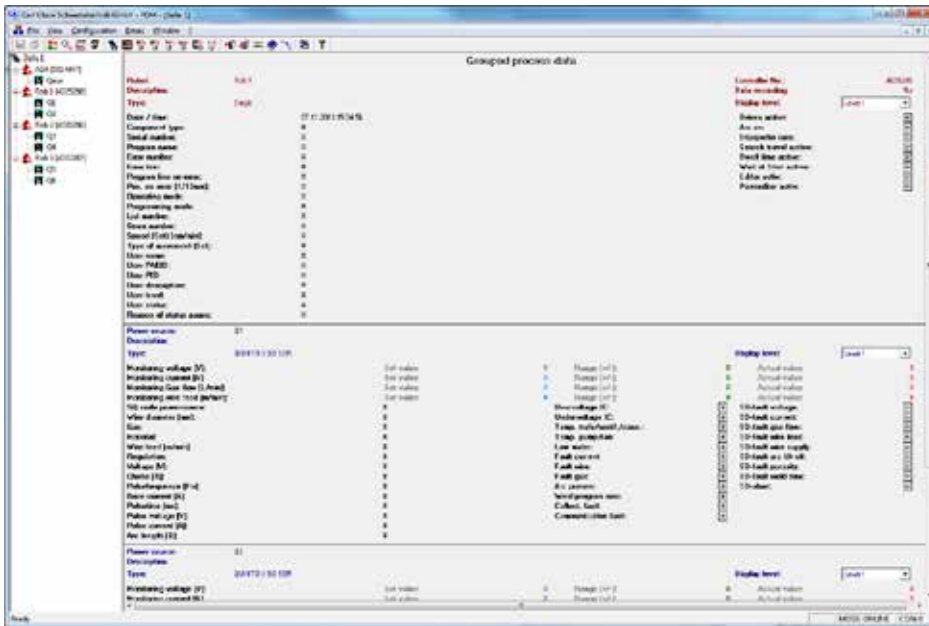
The data format is text-oriented so that the data can be extracted or processed as .txt or as .xml files. The output data can be freely configured. A data output parallel to the normal PDM software functions is possible. Or you just use the software as file interface.

Analyses and evaluations

Component protocols, time and user evaluations can be stored in the formats txt, csv or xml and printed with the print preview. It is also possible that the software saves or prints automatically. The output data can be configured.

Due to the component analysis you can track later which data was used for welding. The customer is able to document the production of every component and thus also the quality.

Data visualisation



Robot operating data and process data of the power sources can be visualised online.

The data can be configured in several levels.

Thus you can see the state of a system at a glance.

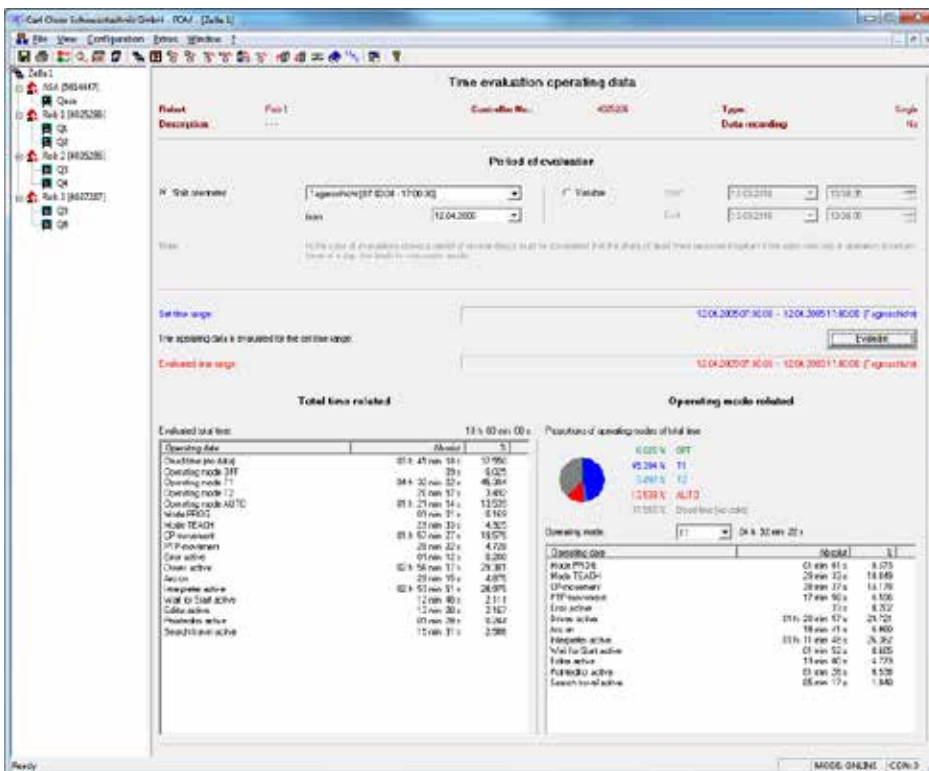
Operational data:

- Operating mode
- Current program
- Error information

Process data: (depending on the connected power sources)

- Actual values, e.g. welding current, voltage, speed
- Information of the weld data monitoring

Time evaluation of the operating data



Detailed time evaluation of the robot operating data.

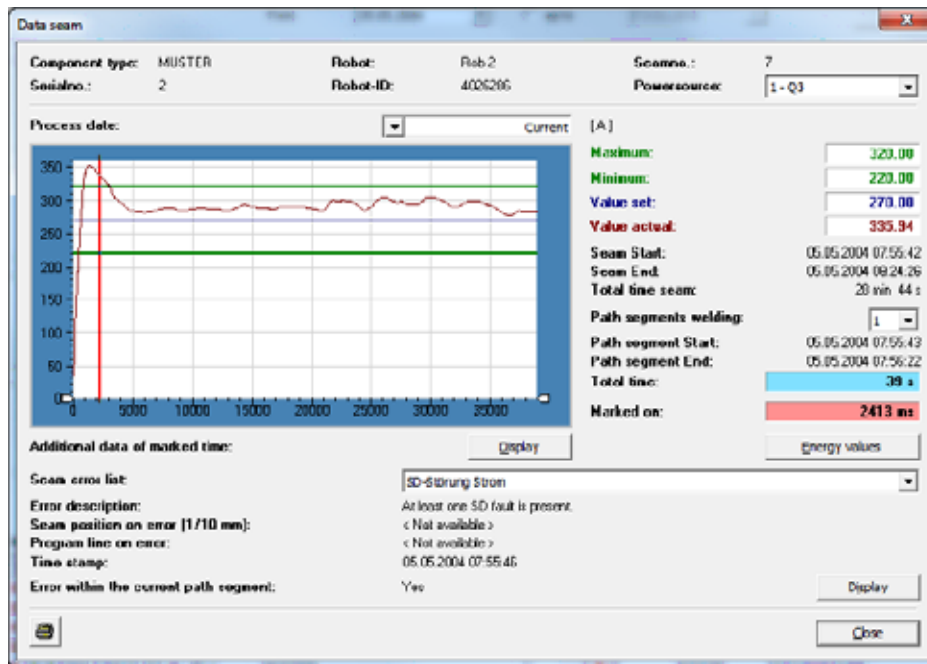
Evaluation for defined periods (e.g. shifts) or for freely adjusted periods.

Evaluation of the absolute times or in percentage related to the measuring period

Display of every single measured period.

When errors occur, further information can be called, as for example error number, error line, program name or active user (only with USM user management system).

Component analysis: Weld seam data

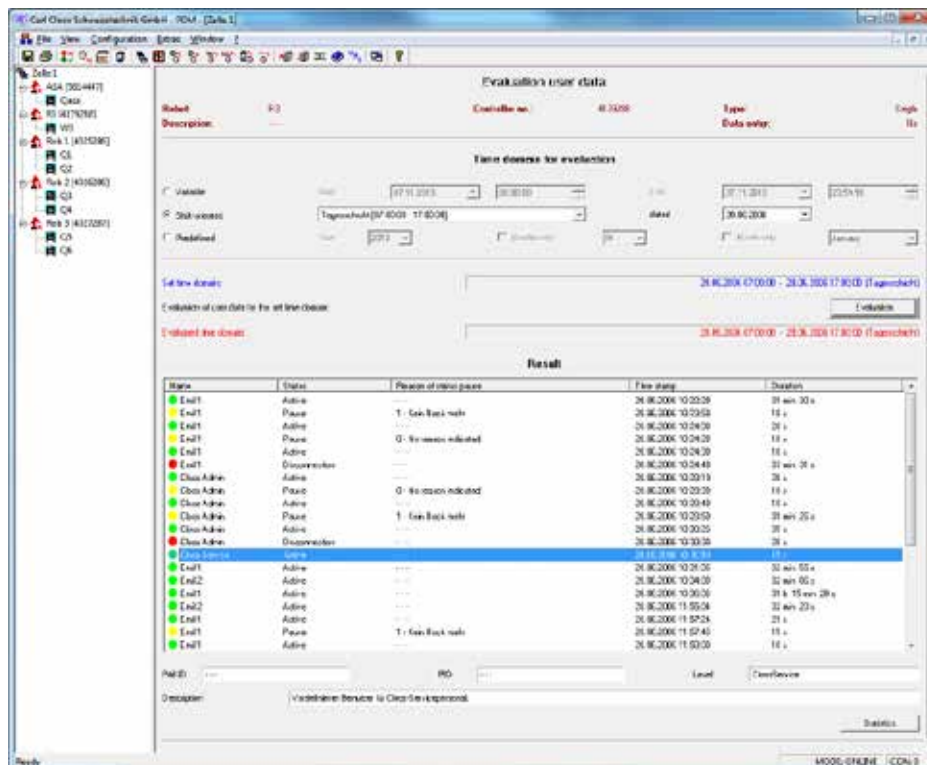


The process data of every recorded weld seam can be shown as graphics.

In the case of an active SD monitoring of the power source the SD set and limit values are displayed.

Display of information about errors occurred.

Evaluation of the user data



Recording of user activities at a robot.

Evaluation for defined periods (e.g. shifts) or for freely adjusted periods.

Activities are login, logout, user change or breaks.

The UMS Software is required for the function Evaluation of user data.



Weld your way!

Providing added value for our customers! This objective drives our 700 motivated employees to achieve maximum performance. We are constantly raising our bar by pushing ourselves to provide innovative welding processes and solutions that will contribute to the long-term commercial success of your company! Our process competence is at the forefront in welding and cutting of various ferrous and non-ferrous metals. We offer our customers individual solutions which are optimised and adapted specifically to your product and production requirements. Leadership and competence equals process automation and welding at its best.

Whatever your needs are, we “Weld your way.” Cloos develops, manufactures and delivers innovative solutions in more than 40 countries worldwide.



With our QINEO®, the new generation of welding machines for manual and automated applications, and QIROX®, the system for automated welding and cutting, our product range covers the entire spectrum of arc welding technology. Our product portfolio includes intelligent software, sensor and safety technology solutions – all of which are customised to meet your specific needs and requirements! Cloos provides full service solutions – all from a single source!

QINEO®

Arc welding at the highest level:

- Power sources
- Wire drive units
- Welding torches
- Connection cable assemblies
- Accessories



QIROX®

Everything for automated welding and cutting:

- Robot mechanics
- Robot controllers
- Robot positioners
- Workpiece positioners
- Sensors
- Software



Service Hotline

+49 (0) 27 73/85-132

Service

Service - The "Power Plus" for your production success:

- Efficiency check
- Simulation
- Test installation
- Training
- Hotline
- Spare parts management

Carl Cloos Schweisstechnik GmbH
Main office: Carl-Cloos-Strasse 1
Central warehouse: Carl-Cloos-
Strasse 6
35708 Haiger
GERMANY

Tel.: +49 (0)2773 85-0
Fax: +49 (0)2773 85-275
E-Mail info@cloos.de

The logo for CLOOS, featuring the word "CLOOS" in a bold, blue, sans-serif font. The letters are stylized with a double outline effect.

Weld your way.