

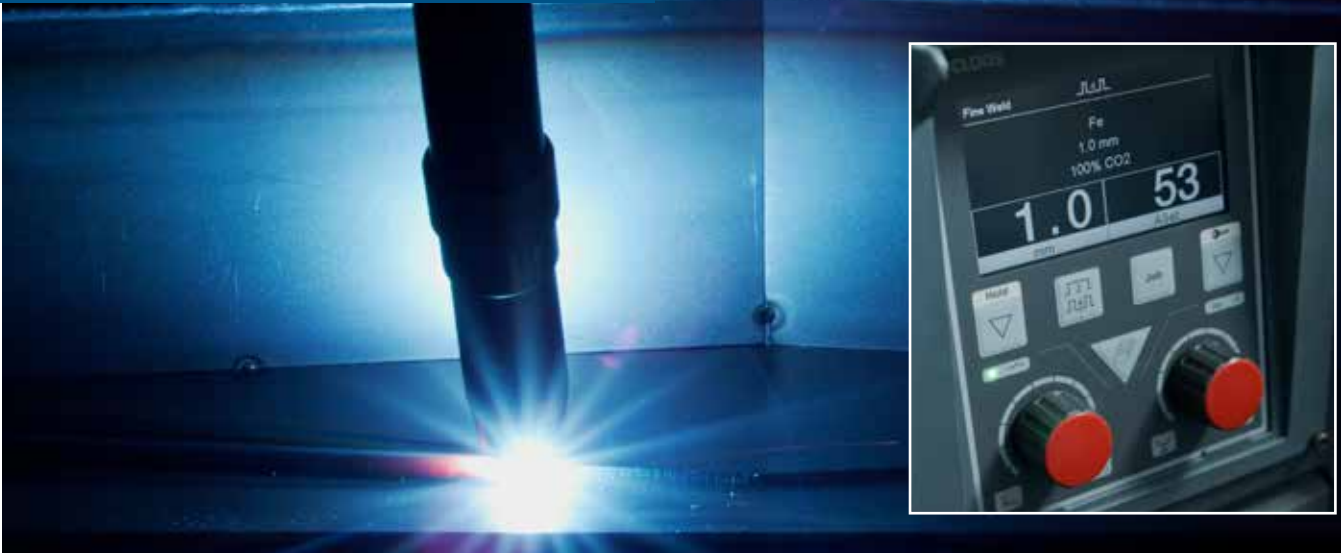


Fine Weld

Finest weld seams for excellent quality

CLOOS

Weld your way.



Finest weld seams for excellent quality

Extremely low spatter MIG/MAG short arc for mixed gas and CO₂ welding

Fine Weld is an energy-reduced, current-controlled MSG short arc process for mixed gas and CO₂ welding. Due to the minimised spatter formation, Fine Weld is suitable particularly for thin, coated plates and fine visible weld seams. The stable arc is characterised by an optimum gap-bridging ability and can be mastered excellently in all welding positions.

With Fine Weld, the lowest possible current flows in an arc phase before a drop short circuit occurs. When the liquid wire end comes into contact with the molten pool, a molten bridge should form as free as possible. For this purpose, the current is reduced even further for a short time. The short-circuit current which is then significantly increased to generate the pinch effect is very quickly reduced to low values again shortly before the short circuit is resolved, i.e. before

the molten bridge is separated. As a result, the power in the newly ignited arc is kept low and the molten pool remains quieter due to the lower arc pressure. A short, uncritical current pulse afterwards ensures optimum drop formation at the end of the wire.

With Fine Weld, you reduce the workpiece distortion through the controllable heat input. You avoid extensive reworks due to the minimised spatter formation. Do you also want an extremely low-spatter welding process for excellent welding results with fine welds? Then rely on Fine Wed Weld by CLOOS!

Your benefits

- Minimised spatter formation
- Controllable heat input
- Reduced workpiece distortion
- Optimum gap bridging ability
- Stable, quiet arc
- Well controllable arc

Applications

- Thin plates under CO₂
- Automotive
- Root welding
- Pipeline construction
- Container construction
- All welding positions

Materials

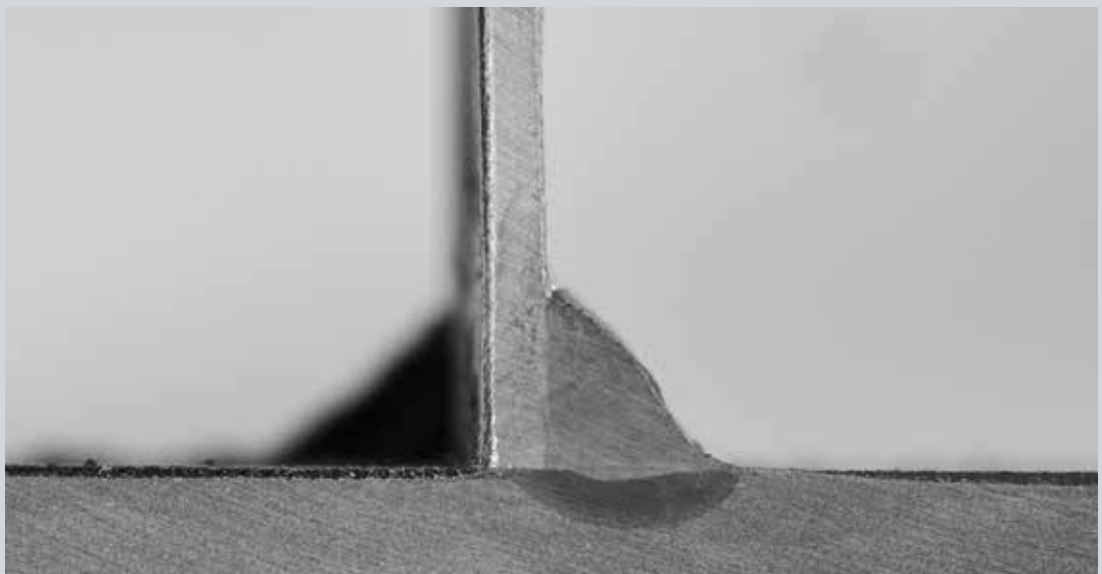
- Steel
- Chrome-nickel
- Coated plates





Application examples

Furniture industry



All over the world!



Carl Cloos Schweisstechnik GmbH
Main office: Carl-Cloos-Strasse 1
Central warehouse: Carl-Cloos-Strasse 6
35708 Haiger
GERMANY

Phone: +49 (0)2773 85-0
Fax: +49 (0)2773 85-275
E-mail info@cloos.de

CLOOS

Weld your way.