

**Top Coating
with the highest
precision and
minimum
overspray**

Final coating system for
customized steel profiles and
constructions





The GIETART Top Coating system - an high-end, automatic spray painting solution for the top coating of steel constructions. Parts are painted fully automatically with the highest precision, without wasting any paint. Attractive, finished products, with an average processing time for touch dry applications of approx. 45-60 minutes. The system is available with an unique 3D scanning systems for painting various forms interchangeably.

EXCEPTIONAL RELIABILITY AND MAXIMUM UPTIME

MOST ENVIRONMENTALLY FRIENDLY SOLUTIONS

LOWEST COST OF OWNERSHIP



KALTENBACH
PROMISES

BENEFITS AT A GLANCE

- > High flexibility
- > Short drying times
- > Various spray gun configurations
- > Limited space requirements
- > Considerable savings on gas consumption
- > Minimized cleaning times
- > Thickness of paint layer easy adjustable
- > Suitable for water and/or solvent based paints
- > Environmentally friendly and resource-saving products

A SELECTION OF GIETART'S TOP OPTION PACKAGES

Appealing option packages to optimize your shot blasting and painting lines

Blue line

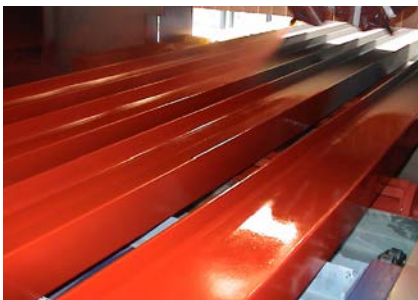
A most environmentally friendly edition

7 Year warranty

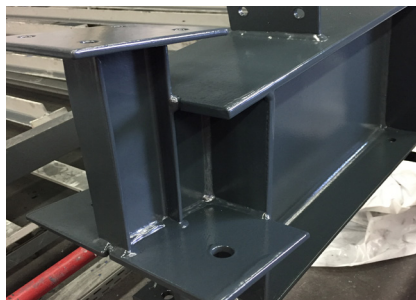
Unique edition for extended service life

3D Scanning system

Painting various forms interchangeably



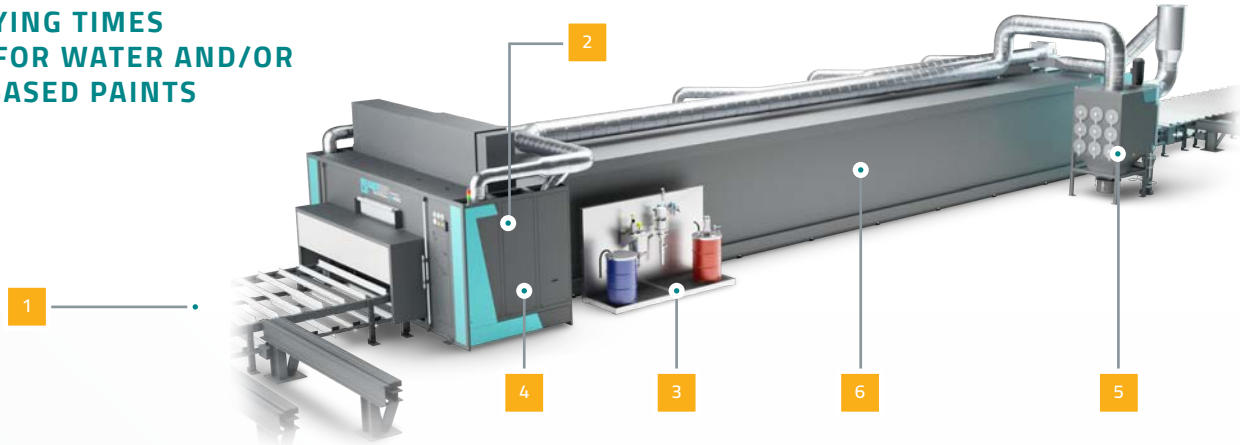
High-end painting process. Clean working environment. Considerable savings on paint. Reduced energy consumption.



Highly efficient coating techniques for the protection of sophisticated, sustainable steel products.

The leading systems in the market for automated, continuous coating of steel parts

- ATTRACTIVE, FINISHED PRODUCTS
- HIGH FLEXIBILITY
- SHORT DRYING TIMES
- SUITABLE FOR WATER AND/OR SOLVENT BASED PAINTS



FEATURES



Painting various forms interchangeably

- Unique GIETART 3D Scanning system
- High flexibility
- First class steel products



Optimal painting results

- Minimum overspray by unique airless spray guns
- Consistent coating applications
- Economic use of paint



Specific paint supply systems for each type of paint

- Efficient paint supply
- Consistent paint texture
- Easy drum exchange



Unique, durable construction of painting booth

- Exceptionally well finished, laminated and teflonized interior
- Easy to clean, quick changeovers possible
- Option: Cabin floor heating



Clean working environment

- Unique dry filter system for filtering out paint dust
- Automatic filter cleaning
- Highly environmentally friendly system



Energy efficient drying tunnel

- Considerably shorter drying times
- Enhanced painting capacity
- Safe process

HARD FACTS

H T L U - O □ X

GIETART Painting system		Top Coating 1512	Top Coating 2512	Top Coating 3012
Capacity		Capacity depending on the shape and weight of the parts		
Workspace, max.	mm	1,500 x 800	2,500 x 800	3,200 x 800
Working range - plate	mm	1,500	2,500	3,200
Working range - profile	mm	1,000 x 420	1,000 x 420	1,000 x 600
Number of spray guns	pieces	12	12	12
Degree of automation		automatic infeed - automatic outfeed - fully automatic		
Material class		steel		
Working processes		steel constructions - profiles - solid material - plate		



Creating value via software

From unique machine software to complete management information systems, KALTENBACH will be your system supplier.

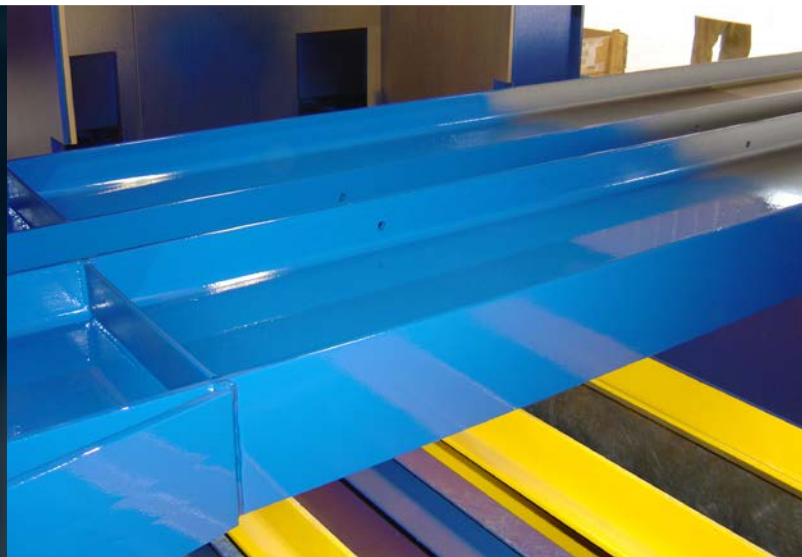


Efficient material handling

Designed to ensure an optimal process flow, and therefore the most effective processing of material in your production area.

OPTIONS

- > 3D Scanner
- > Remote maintenance
- > Big bag collection for foil
- > Cabin floor heating system
- > Paint supply system for
 - 200L barrels
 - 1000L containers
 - 25L bins
- > 2K Paint supply system for two components paints
- > Circulation system for zinc based paints
- > Paint storage units with/without ATEX
- > Regenerative thermal oxidizer (RTO)



KALTENBACH

KALTENBACH B.V.
Pruisische Veldweg 20
7552 AC Hengelo
The Netherlands

Tel. +31 (0) 74 2452 452
E-Mail info-nl@kaltenbach.com

www.kaltenbach.com